



AVH8516

8-Bay Storage
Event Pop-up / Preview
Alarm Scenario Customization
16CH 8MP Real-Time Video Recording

8-Bay 16CH 8MP Real-time H.265 NVR

Features

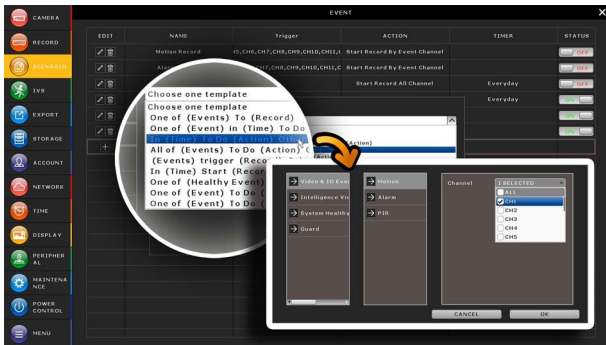
H.265 Compression Technology

With this compression technology, the recording capacity is greatly enhanced as well as bandwidth saving for better efficiency and performance than the systems employing other compression formats



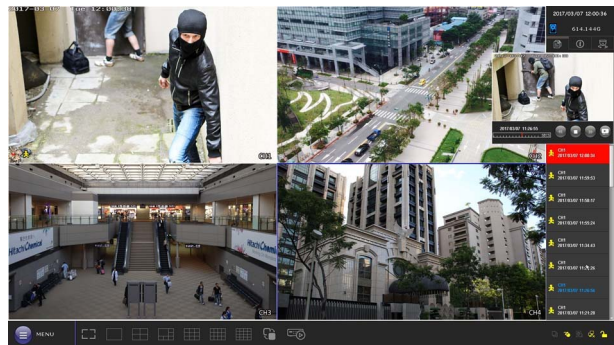
Alarm Scenario Customization

“Scenario” is a new feature allowing you to customize a series of actions which will be run automatically after the specified event occurs. There are several scenario templates for you to choose when and what to do after a specific event occurs.



Event Pop-up / Preview

All events are listed on the right panel with corresponding event icons for you to quickly recognize the event type. The most current one will flash to catch your attention. Click one event and you're able to preview the footage with pre-alarm images.



Push Video & Push Status - Active Event Notification with EagleEyes App

- Push Video to send instant notifications for an alarm event when an alarm device is connected to the DVR.
- Push Status to send instant notifications for system events, such as video loss or HDD data removal.

8-bay Storage Capacity

To solve the large storage requirement of 4K2K recording, this NVR supports up to 8 hard disks to keep high quality H.265 video data without overwriting data so quickly. A power-saving mechanism is also adopted to reduce power consumption.

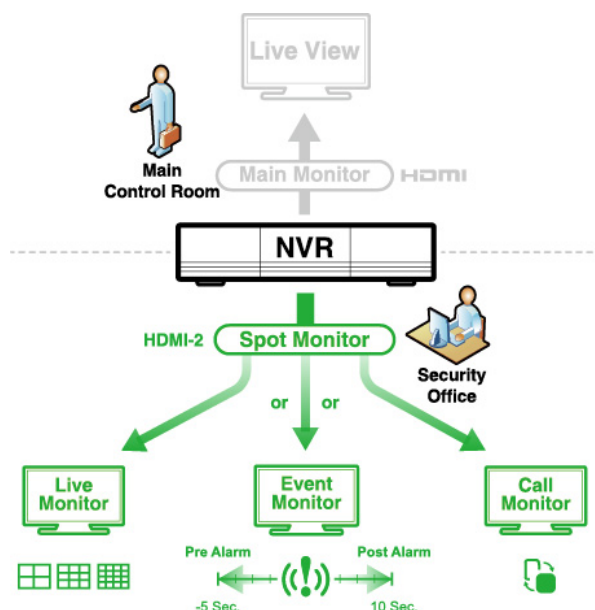
IVS

IVS (Intelligent Video System) could be used to set a virtual detection line for people counting, virtual fence, and one-way pass.

It's the advanced usage for motion detection to not only record but also summarize the detection data for further analysis.

Spot Monitor

In addition to the main display via the main HDMI output, you can assign a secondary display to show live view, call monitor or event monitor.





Specifications*

| Hardware | | |
|-------------------------------|---|----------|
| Video Input | One LAN port (up to 16 IP cameras) | |
| Video Output | HDMI x 2 / VGA x 1 / Composite x 1 | |
| Video Output Resolution | HDMI-1: Up to 3840 x 2160 (4K2K) HDMI-2 & VGA: Up to 1920 x 1080 (Full HD) | |
| Audio Output | YES (Line out / HDMI) | |
| Audio Input | YES (Mic in) | |
| Alarm I/O | Alarm out only | |
| HDD Storage** | Eight 14TB hard disks | |
| USB Ports | USB 3.0 x 1 / USB 2.0 x 2 | |
| Ethernet | LAN port | 1000Mbps |
| | Internet port | 1000Mbps |
| Software | | |
| Video Compression Format | H.265 | |
| Audio Compression Format | G711 | |
| Local / Remote Display Mode | 16CH | |
| Local / Remote Playback Mode | 16CH | |
| Local Single Channel Playback | YES | |
| Record Stream | Dual | |
| Recording Mode | Manual / Event / Alarm / Schedule | |
| Recording Throughput | Up to 480 IPS @ 3840 x 2160, Up to 300Mbps | |
| Pre-alarm Recording | YES | |
| Quick Search | Time / Event | |
| Event Notification | Push Video / Push Status / Video Mail / Message Mail | |
| Security | Multiple user access levels with password | |
| Multicast | YES | |
| Seamless Recording*** | YES | |
| EaZy Networking | YES | |
| IVS*** | YES (16CH) | |
| Spot Monitor Setup | Call Monitor / Event Monitor / Live Monitor (HDMI-2 only) | |
| Alarm Scenario Setup | YES | |
| Alarm Pop-up & Preview | YES | |

Specifications*

| Network | |
|----------------------------------|--|
| Protocols | DDNS, PPPoE, DHCP, NTP, SNTP, TCP/IP, ICMP, SMTP, FTP, HTTP, RTP, RTSP, RTCP, IPv4, Bonjour, UPnP, DNS,UDP,IGMP, QoS, SNMP |
| ONVIF Compatible | YES |
| Max. Online User | 20 |
| Remote Access | (1) Internet Explorer on Windows operating system (2) CMS Lite, 32CH CMS software for Windows operating system (3) EagleEyes on iOS & Android mobile devices |
| General | |
| Power Source (±10%) | DC19V / 3.42A |
| Power Consumption (±10%) | 14.25W (No hard disks connected) |
| Operating Temperature | 10°C ~ 40°C (50°F~104°F) |
| Operating Humidity | 10% ~ 85% |
| Dimensions (mm)**** | 358 x 267 x 152 |
| Net Weight (kg) | 5.8 |
| Minimum PC Browsing Requirements | <ul style="list-style-type: none"> • Intel core i3 or higher, or equivalent AMD • 2GB RAM • AGP graphics card, Direct Draw, 32MB RAM • Windows 10, Windows 8, Windows 7, Windows Vista & Windows XP, DirectX 9.0 or later • Internet Explorer 7.x or later (Windows Edge not supported) |
| Optional Peripherals | Full HD Matrix (HDM02) / PTZ Joystick (AVX102) |
| Certification | CE / UL (Power Adapter) |

*The specifications are subject to change without notice

** HDDs are optional.

*** Available only when the connected cameras are supported

**** Dimensional tolerance: ±.5mm

Rear Panel

